

# Information Evening 2023

## Nursery & Primary

## Lower Secondary



European  
School  
Copenhagen



# Programme

- Welcome and introduction /Julie Rørdam Thom, Director
- Presentation of the school / Helle Degn, Head of Primary and  
Rikke Groth Nielsen, Deputy Head of Primary
- After School Care /Laura Mackenzie, Head of After School Care



*"Educated side by side, untroubled from infancy by divisive prejudices, acquainted with all that is great and good in the different cultures, it will be borne in upon them as they mature that they belong together. Without ceasing to look to their own lands with love and pride, they will become in mind Europeans, schooled and ready to complete and consolidate the work of their fathers before them, to bring into being a united and thriving Europe."*

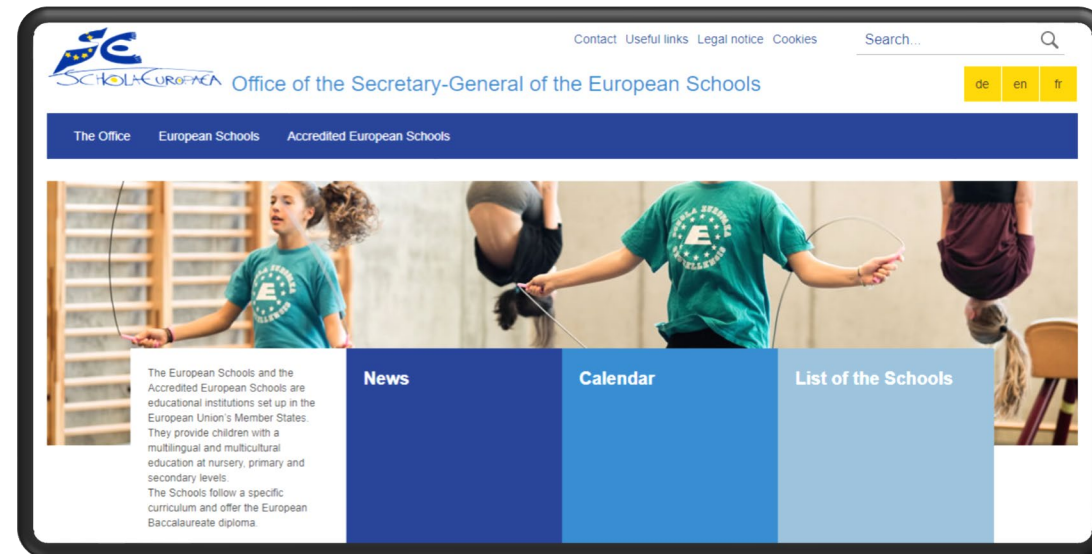
(Marcel Decombis, Head of European School, Luxembourg between 1953 and 1960)



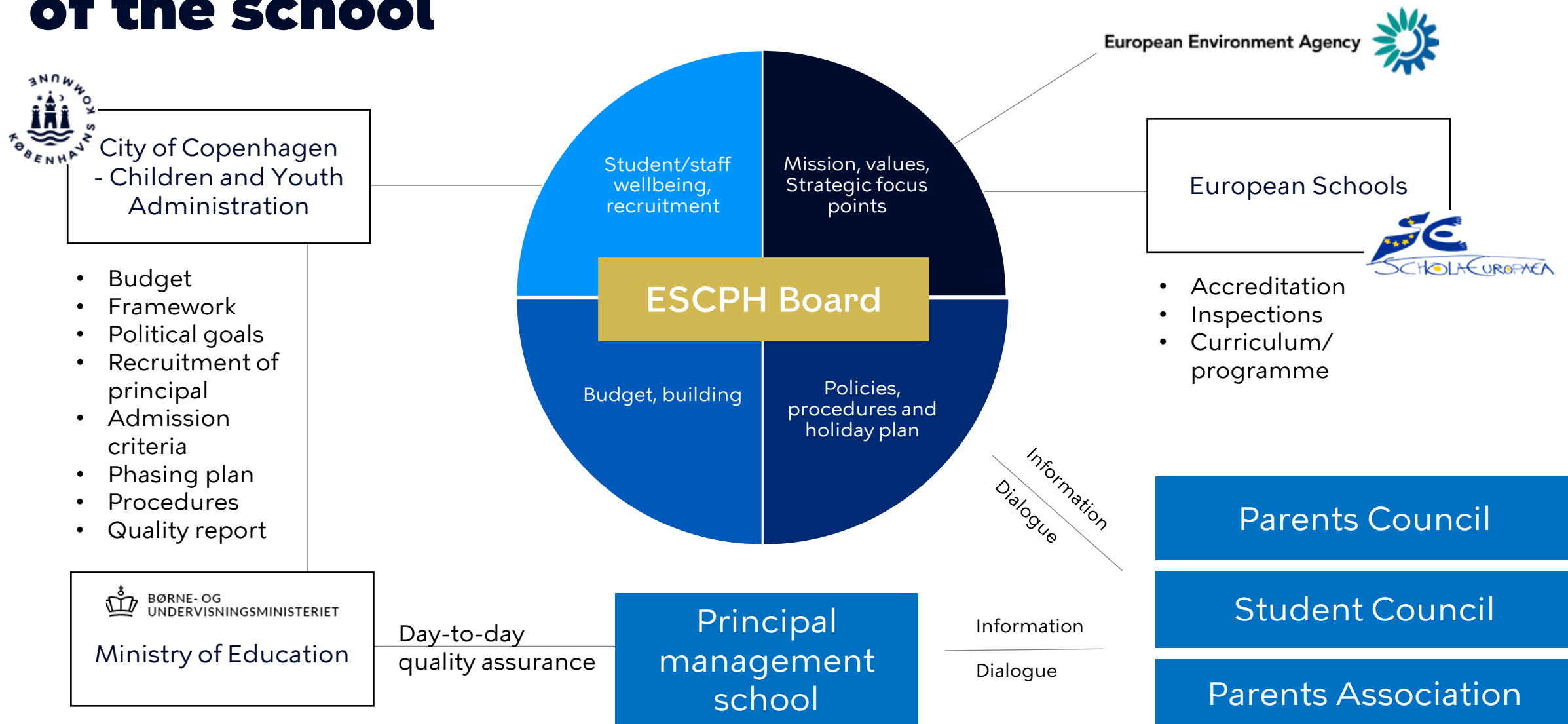


# European Schools (ES) system

- Currently 37 European Schools (Type I and II)
- ESCPH is an Accredited European School (Type II)
- Audited every three years by ES inspectors
- Strong focus on languages and science, cultural understanding and collaboration



# The organisation of the school



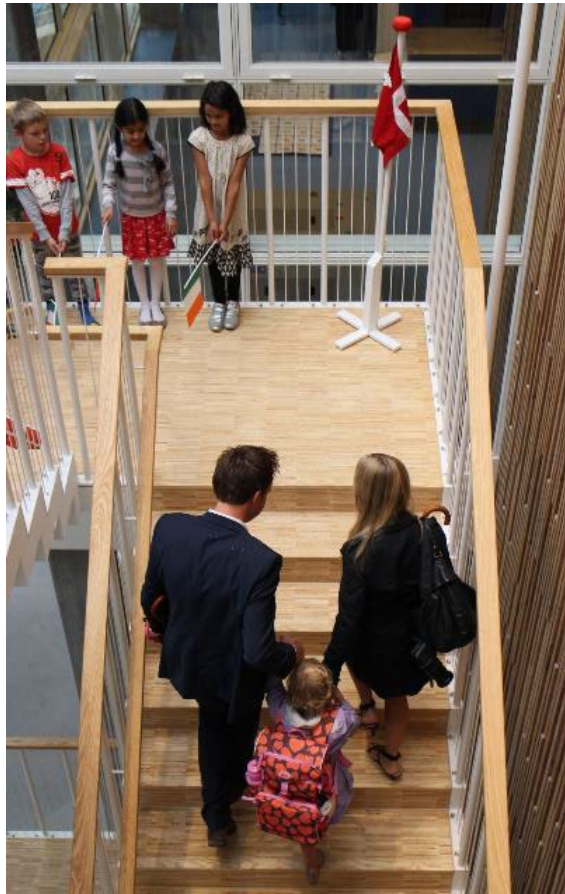
# Lower Secondary rolling admission

The presentation for Lower  
Secondary rolling admission will  
now continue in room 119





# Opening of the school in 2014







# Moved to Carlsberg in 2018



Photo: Adam Mørk



Photo: Kristian Brasen







# An established school

- **2014:** First four classes opened (ODK & EN, P & EN)
- **2018:** First secondary classes opened
- **2019:** French language section opened
- **2020:** Upper Secondary/ Gymnasium opened
- **2023:** Our first EB students graduate
- The years to come : Siblings



## August 2024

Year	DA	EN	FR	DA/FR*
0	X	X	X	
P1	X	X	X	
P2	X	X	X	
P3	X	X	X	
P4	X	X	X	
P5	X	X	X	
S1	X	X	X	
S2	X	X		X
S3	X	X		X
S4	X	X		X
S5	X	X		X
S6	X	X		X
S7	X	X		

\* DA/FR - a Danish class with option of French L1 lessons for bilingual French/Danish students



# Our mission

## VISION

We educate to instil insight and a global mindset.  
We create the future voices of the world.

## MISSION

The European School Copenhagen is a multicultural and multilingual learning environment of high academic standard, committed to developing lifelong learners and responsible global citizens.

## VALUES

RESPECT

COMMIT-  
MENT

COLLABO-  
RATION

RESPONSI-  
BILITY

CURIOSITY

EMPATHY





# Our school values

## RESPECT

We respect ourselves, each other and our environment.

## COMMITMENT

We are committed to achieving our goals and overcoming our challenges.

## COLLABORATION

We understand the value of working together and supporting each other.

## RESPONSIBILITY

We take ownership of our own learning and actions.

## CURIOSITY

We approach learning with an open and inquisitive mind and are interested in other cultures and ways of life.

## EMPATHY

We show empathy and kindness towards each other and care about the greater world.







# Educational Cycles



Nursery class  
- 1 year



Primary  
- 5 years



Secondary  
- 7 years

Completing with  
the European  
Baccalaureate





# Subjects & pedagogy

## Primary school year 1-2

Mother tongue (L1)

Mathematics

Language 2 (L2)

Discovery of the world

Art

Music

Physical Education

Religion

Recreation

## Primary school year 3-5

Mother tongue (L1)

Mathematics

Language 2 (L2)

Discovery of the world

Art

Music

Physical Education

Religion

European hours

Recreation

Social skills  
Independence  
Buddy work  
Project work  
Group work  
Democracy







# Strong focus on languages

	Danish (L1) section	English (L1) section	French (L1) section
L2 from Primary 1	English, German or French	French, German or Danish	English, German or Danish
L3 from Secondary 1	English, German or French	French, German or Danish	English, German or Danish
L4 from Secondary 4	English, German, French or Spanish	French, German, Danish or Spanish	English, German, Danish or Spanish

- Need min. 7 students to offer a language group.
- Students can be at very different levels within a language group and the teacher seeks to differentiate accordingly



## Secondary

- L3 and L4 introduced
- Many subjects taught in the student's L2 (e.g. human science, geography, art, music, etc.)
- Secondary 5 – harmonised exams
- Secondary 6 and 7 - curriculum closely follows the European Baccalaureate diploma programme
- We offer EB diploma not Folkeskolens Afgangsprøve or Studentereksamen



Photo: Kristian Brasen



# School events & activities

Field trips



World Math Day



Use appropriate lines of communication



Sports Day



UNICEF Rights-respecting school

Cultural days

Theme weeks

Musicals & assemblies

Book Parade

Well-being Day





# Canteen & culinary school

- On-site production kitchen, chefs and staff
- Students in P5 and S1 participate in the food preparation
- Ingredients are 90-100% organic (økologisk spisemærke guld)
- Focus on variety, nutrition and healthy eating, sustainability, food waste and animal welfare





# School policies & guidelines

- Punctuality/absence
- Wellbeing
- Follow Danish law
- Drop-off
- Digital awareness



*See the A-Z Guide for more information*



# School/home communication & collaboration

Principles	
<b>Be respectful</b>	Language, tone, role model, confidentiality
<b>Collaborate</b>	Work together, support the school's work, share the positive stories
<b>Show empathy</b>	Look at the situation from the other person's perspective, consider other people's needs
<b>Show trust</b>	Assume people have good intentions
<b>Be clear and concise</b>	Appreciate people's time/effort, communications should be clear, concise and timely
<b>Use the right channels</b>	Raise questions/concerns directly with the person concerned. If the problem persists, speak with teachers, then management.



# After School Care (ASC)

- Open 6:30 – 5pm
- Grade 0-3
- Pedagogues in school and ASC
- Activities aligned with the school day
- Communication & contact information via Aula Komme/Gå modul
- After School Club for older children (Bryggergården)







# Resource Centre / Support





# The parent perspective

## Parent influence and involvement

- School Board and Parents Councils
- Parents Association

## Events and activities

- Coffee mornings, Christmas and summer party, Annual School meeting
- P/t conferences, parent's meetings, School reports



Photo: Torben Eskerod







# The parent perspective

## Why choose ESCPH?

- Academics and pedagogy
- Languages
- International identity and community
- Values





# Admission categories

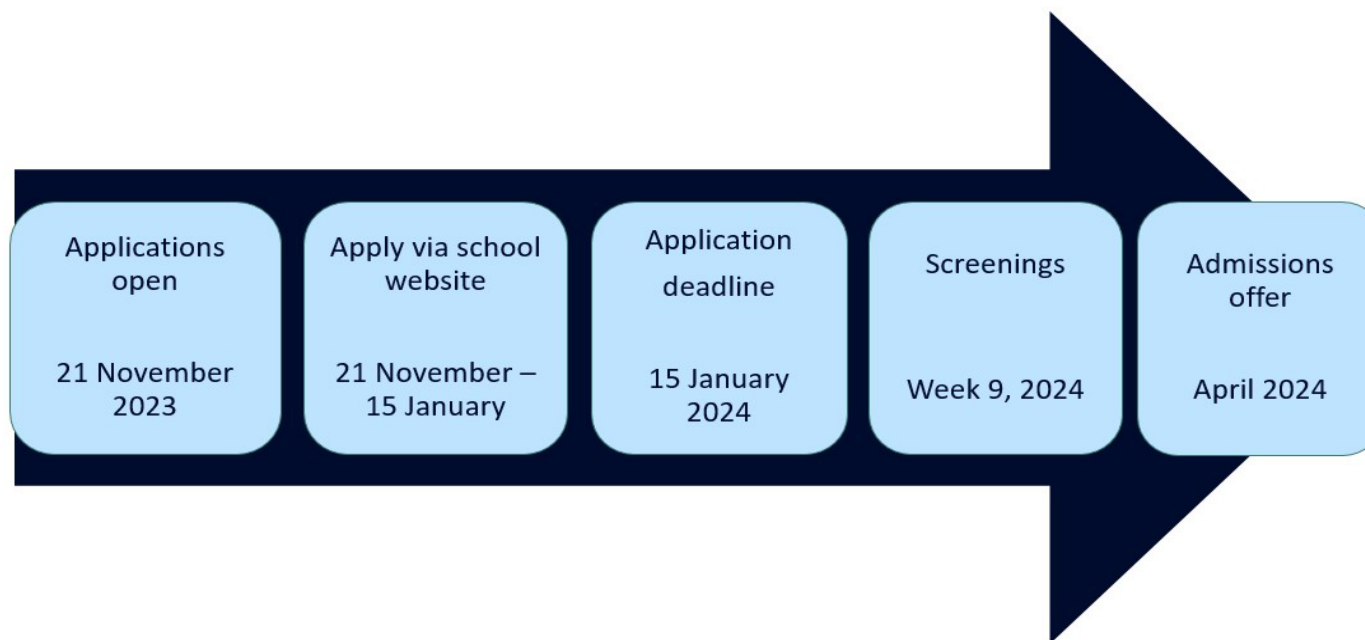
# Admission criteria

- **Age requirement** (e.g. must be born before 1/10/2019 for nursery class starting in 2024) Normal start in the calendar year they turn 6
- **Expectations for new nursery students:**
  - Can carry their own school bag
  - Able to take clothes on/off themselves
  - Independently use the bathroom
  - Able to understand a collective message
- **Admission categories in order of priority** (see table)
- **Siblings:** No sibling guarantee
- **There is no waiting list**
- **More applicants than available spaces:** Have a back-up plan

a.	Children of EU institution staff members are entitled to admission.
b1.	Children of whom one or both parents are <b>international employees</b> who have come to Denmark with the purpose of <b>working in Danish or international companies, organisations and educational institutions.</b>
b2.	Children of whom one or both parents are <b>returned Danish employees working in Danish or international companies and organisations,</b> and who have had a permanent workplace outside Denmark for a total of one year within the last five years.
b3.	Children moving here from another <b>European school.</b>
B4.	In case of extra places, these may be offered to <b>local applicants</b> who meet the necessary language requirements for admission.
Sibling	<b>Siblings</b> of pupils already enrolled in the European School Copenhagen, who meet the above criteria, are <b>always invited to a screening and have priority within the admission category if they meet the language and other requirements.</b>



# Timeline for Admissions to New Nursery



# Screening

- **Language skills** Mother tongue level, fluent
- **Academic** Different tasks to be solved with screening teacher
- **School readiness** Focusing, listening, able to understand a collective message, interaction with other children

**2 hours academic and social screening**, parents waiting in the waiting area

- **Individual language and academic screening with teacher:** 15-20 minutes
- **Screening with pedagogical staff, activities with other children:** 1.5 hours

## Please note:

- It is not possible to change screening date and time
- No online screening
- No feedback after screening



# Choosing language section

- **Not possible to apply for 2 language sections:** Language section must be chosen before applying
- **Language level:** Mother tongue, language spoken at home, parents must be able to help
- **Do not write fluent if not fluent**
- **Parents meetings and weekly newsletters** in the language of the section





# Admissions

- Admission primarily for the new nursery classes that we open every year
- BUT you can also apply for admission in the already established classes in case spaces become available (rolling admission)
- You apply online via the links on our website:  
<https://escph.dk/admissions/>
- **If you have a question about admission:** Please call the Admissions Hotline on +45 36 140 190 open on
  - Mondays 11-12am, Tuesdays 9-10am, and Thursdays 1-2pm





# After the screening

**Screening staff, management and admission committee make the classes**  
(students with the best results) class dynamic

**Offer of admissions or rejections will be sent out**

**The screening result can be different from what you expected**  
(no feedback, no second screening)

## **Rejections for 3 reasons:**

- No available spaces – some students met the criteria on a higher level – reserve list
- Child did not meet the criteria and would be challenged if admitted
- A certain language level in classes must be ensured





# Visit Classrooms & Q&A

- English language section – Laura Mackenzie, Classroom first floor
- Danish language section – Pia Ribberholt, Classroom first floor
- French language section – Fanny Simon, Classroom first floor
- General questions and KKFO – Laura Mackenzie, First floor
- General questions Primary – Rikke Groth Nielsen, First floor
- Admission/Pedagogical – Helle Bjerre Degn, Canteen
- Admission – Administration staff, Canteen



# Information Evening 2023 Nursery & Primary



European  
School  
Copenhagen